

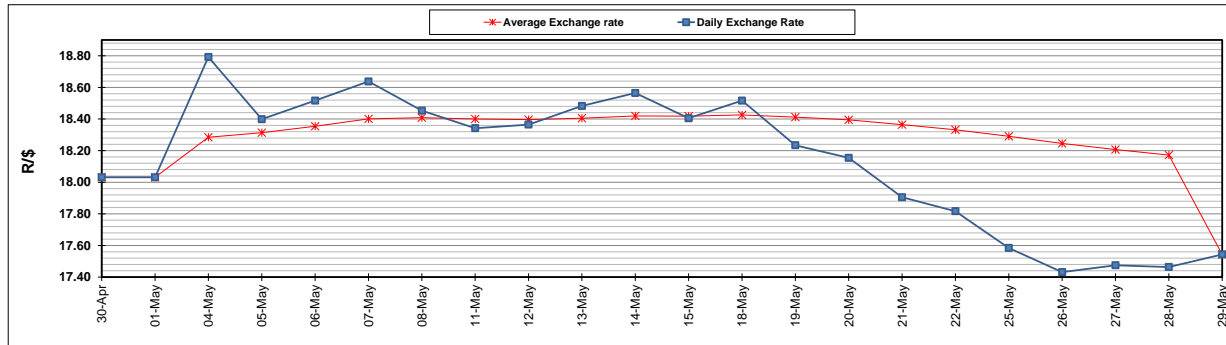
	PETROL 95 ULP	PETROL 93 ULP & LRP	DIESEL 0.05%	DIESEL 0.005%	ILL. PAR.
GAUTENG PUMP PRICE (SA c/l) AS FROM 03/06/2020	1,340.000	1,320.000	-	-	-
WHOLESALE PRICE (SA c/l) AS FROM 03/06/2020	-	-	1,130.560	1,138.960	489.828
SINGLE NATIONAL MAXIMUM RETAIL PRICE	-	-	-	-	597.000
BASIC FUEL PRICE - 29/05/2020 (SA c/l)	462.951	439.854	461.293	465.645	414.403
PRESS RELEASE CONTRIBUTION TO BFP 29/05/2020 - 29/05/2020 (SA c/l)	274.770	264.770	357.630	367.030	245.128
UNIT OVER/(UNDER) RECOVERY - 29/05/2020 (SA c/l)	(188.181)	(175.084)	(103.663)	(98.615)	(169.275)
AVERAGE BASIC FUEL PRICE 29/05/2020 - 29/05/2020	462.951	439.854	461.293	465.645	414.403
AVERAGE UNIT OVER/(UNDER) RECOVERY 29/05/2020 - 29/05/2020	(188.181)	(175.084)	(103.663)	(98.615)	(169.275)

ANALYSIS MOVEMENT OF AVERAGE OVER/(UNDER) RECOVERY

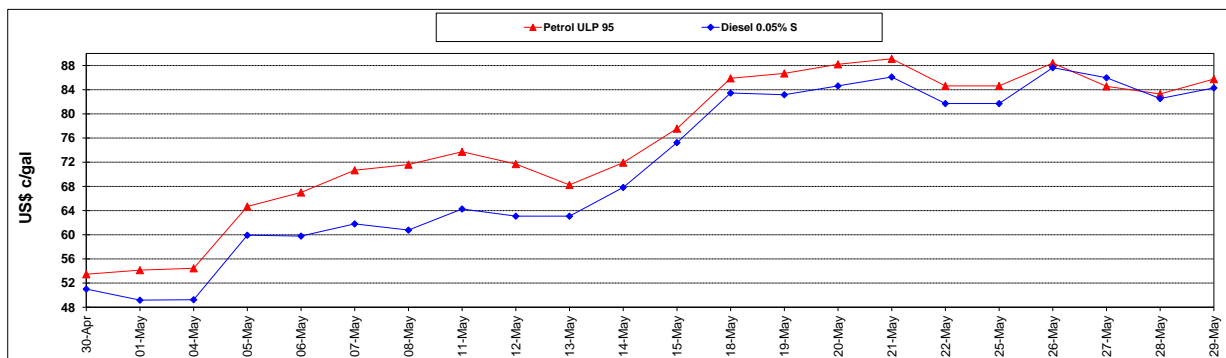
	PETROL 95	PETROL 93	DIESEL 0.05%	DIESEL 0.005%	ILL. PAR.
- MOVEMENT IN INTERNATIONAL PRODUCT PRICES	(204.761)	(190.837)	(120.184)	(115.292)	(184.117)
- MOVEMENT IN EXCHANGE RATE	16.580	15.753	16.521	16.677	14.842
AVERAGE UNIT OVER/(UNDER) RECOVERY 29/05/2020 - 29/05/2020	(188.181)	(175.084)	(103.663)	(98.615)	(169.275)

R/\$ EXCHANGE RATE - (R/\$17.5432 - 29/05/2020)

EXCHANGE RATE USED IN BASIC FUEL PRICE



INTERNATIONAL PRODUCT PRICES OF BASKET USED IN BASIC FUEL PRICE



BASIC FUEL PRICE IN SA CENTS PER LITRE

